



**BasicLine**

# Therapy chair



**Dialysis  
Transfusion  
Oncology**

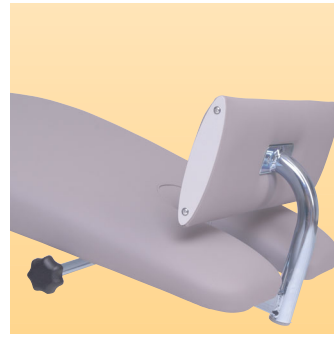
**bionic**



10 cm wheels for fast and easy moving of the chair with brake on each wheel.



Easy to lower armrest for optimal arm support and necessary adjustment during treatment.



Manually adjustable footrest to provide best comfort for small and tall patients.



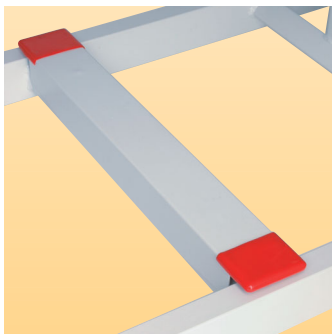
Comfort position for comfortable rest of the patient during treatment.



Easy to operate remote control for individual adjustment of sitting position by patient and nurse.

## Functionality

## Safety



Emergency foot pedal allows hands free operation in an emergency case and also prevents unintended misuse by the patient.



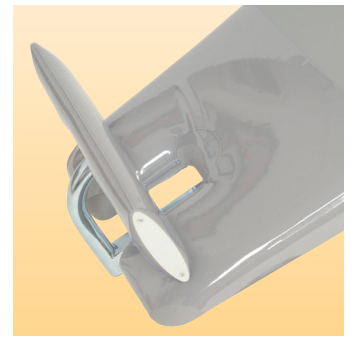
Equipotential bonding in compliance with EN 60601 gives patients on dialysis with catheters the necessary protection.



High speed shock position allows very fast reaction in case of shock and immediate initiation of emergency measures.



# ne Therapy chair



Optional plastic protectors for leg and footrest to protect most sensible parts of the chair against dirt.



A console table for blood mixing scales or other instruments can also be fitted to the chair.

## Accessories



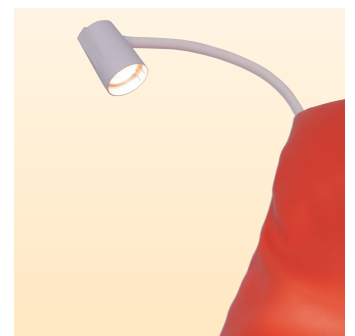
The optional back handle allows easy moving of the chair and serves as a holder for reading lamp or paper roll holder.



A paper roll holder for a roll of 50 cm width paper can be mounted on the back handle of the chair.



Infusion pole can be fitted to specially designed receptacle.



The additional reading lamp can be connected on the back handle and is switched on / off directly on the lamp.

# Technical data

## Dimensions

Seat section width	<b>60 cm</b>
Chair width, incl. arm rests	<b>90 cm</b>
Total length	<b>215 cm</b>
Total weight	<b>80 kg</b>

## Adjustment features

Back section (synchronously with leg section)	<b>75° - 20°</b>
Seat section	<b>30° - 5°</b>
Leg section (synchronously with back section)	<b>5° - 30°</b>
Foot rest	<b>30 cm</b>
Height (fix)	<b>60 cm</b>

## Safety

Safe maximum load	<b>180 kg</b>
Angle of shock position	<b>- 12°</b>
Time for shock position	<b>15 sec</b>

## Electrical specifications

Power supply / voltage	<b>230 V 50/60Hz</b>
on demand	<b>110 V 50/60Hz</b>
Voltage	<b>173 VA</b>
Protection class	<b>2</b>
Protection category	<b>IPX 4</b>
In compliance with	<b>EN 60601</b>
Motors	<b>2</b>



Bi-colour design allows different colour combinations.

Standard colour:

Chrom grey



Special colours for Bi-colour application:

Feuer



Atoll



Lima



Amazonas

